

Beauty Heroes

We've done the groundwork to find the ultimate health and beauty heroes. These are the brands we use and trust for their quality, integrity and results. Thoughtful, effective and worth a place in your routine.

2



Vital Fuel

M BODY transforms everyday wellness with foodceuticals designed for modern women. Creatine supports energy, focus and metabolism; MSM enhances skin, hair and recovery, while The Absolute delivers fibre, prebiotics and lasting vitality. Each formula is crafted from clean, high-quality ingredients with zero fillers, blending easily into smoothies, juice or water. Smart, effective and unapologetically potent, M BODY simplifies wellness, empowering you to feel strong, nourished and balanced every day. mbodyminerals.com

3



Tinted Luxe

Bobbi Brown's Extra Lip Tinted Balm is your next go-to for lips that feel nourished, soft and subtly fuller. Its innovative plumping formula delivers an instant moisture boost and long-lasting hydration while smoothing fine lines. Rich, creamy butters and botanical oils melt instantly on the lips, while the tint adapts to your natural tone for a fresh, healthy-looking flush. With a new range of cool pinks and versatile nudes, it is a chic daily essential that enhances any look. bobbibrown.com.au

4



Retinoid Ritual

Aesop's Resolute Facial Concentrate is a genuinely transformative addition to any night routine. Years in the making, it features a sophisticated Retinoid that smooths and refines while remaining gentle on the skin. The sumptuous oil-serum absorbs effortlessly, leaving a complexion that feels nourished, rebalanced and renewed. Over time, skin appears softer, calmer and more settled. Luxurious yet understated, it is a modern cult essential for those who value efficacy paired with sensory pleasure. aesop.com

8



Hair Elixir

Kérastase Gloss Le Parfum is a daily ritual for hair that feels as beautiful as it smells. Capturing the signature of Gloss Absolu, it leaves strands soft, delicately scented and subtly radiant throughout the day. The compact, travel-friendly bottle slips easily into your bag for discreet refreshes. Its refined blend of bright citrus and soft florals transforms everyday hair care into a sensory moment that lingers. An elegant finishing touch that enhances even the simplest routine. shop.rodneynwayne.co.nz

1



Glass Glow

Aleph Beauty's Aura Gloss is the sort of product you reach for daily and quickly become devoted to. It delivers a high-shine finish that feels light and comfortable on the lips, paired with the softness of a nourishing balm. A purposeful blend of botanicals works subtly to enhance fullness over time, while rich plant oils soften and restore. The result is radiant yet refined, enhancing rather than masking. Clean, conscious, and genuinely wearable, this is gloss reimaged for everyday wear. alephbeauty.com

5



Metal Magic

L'Oréal Professionnel Serie Expert Metal Detox is a clever trio that protects colour, strengthens hair and restores shine by targeting metal in your water. The shampoo, mask and leave-in work together to neutralise invisible deposits, leaving hair softer, smoother and more resilient. Colour stays luminous, and highlights maintain their clarity, while the formulas preserve natural movement. A rigorous, science-led approach to at-home haircare that keeps your colour looking salon-fresh between appointments. shop.rodneynwayne.co.nz

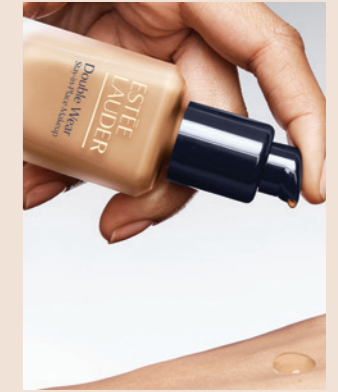
6



Flushed

A new generation of glow arrives with the Light Reflecting Blush by NARS, where colour meets light in the most flattering way. Powered by the brand's Light Reflecting Complex, micronised pigments and pearlescent particles diffuse light across the skin, creating a soft-focus, natural flush that builds effortlessly. The texture is silky, almost weightless, melting into the complexion rather than sitting on top. The effect is soft yet refined, a blush that feels less like makeup and more like the appeal of beautifully lit skin. mecca.com

7



Matte Muse

The new Double Wear Stay-in-Place Makeup from Estée Lauder is a reimaged classic that lives up to its legendary status. Lightweight yet buildable, it evens skin tone, smooths pores and adapts beautifully to the skin. Colour lasts for 36 hours, resisting transfer, heat and humidity, while oil control and hydration keep skin balanced. Presented in a sleek, minimalist glass bottle, it is the definitive foundation for those seeking long-lasting coverage with a natural, polished finish. esteelauder.co.nz

9



Cult Contour

BOOST LAB builds on the viral success of its cult-favourite Neck Serum with the new Pro-Lift Neck & Décolletage Cream. Lightweight yet luxurious, it visibly lifts, firms and smooths sagging skin, redefining the neck and jawline within hours, with continued improvement over time. Clinically powered and simple to incorporate into morning or evening routines, it addresses wrinkles and crepey texture, leaving skin nourished, sculpted and refreshed. This is neck and décolletage care elevated with intention. boostlabco.com

10



Gentle Reset

Embodyme's new Hand & Body Wash reframes cleansing as something far more intuitive. Built around the brand's ScentState philosophy, each formula is designed to shift your mood as much as cleanse the skin, with Joy and Peace offering a subtle sense of lift or calm. The texture is simple, the experience immersive. With each use, it becomes less about routine and more about return. Thoughtful, feminine and modern, this is body care that resonates on a deeper level. embodymedaily.com